

# SeaLife®

## Product Guide







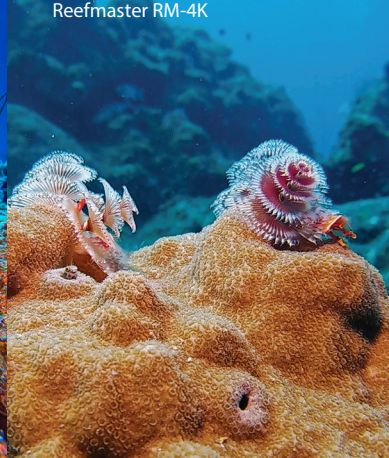
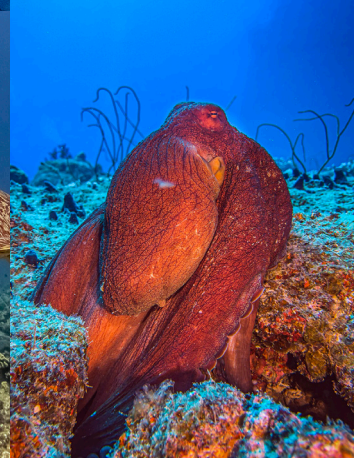
Micro 3.0, Sea Dragon 3000F  
Micro 3.0, Sea Dragon 3000F



SportDiver & iPhone 14 Pro Max



SportDiver & iPhone 14 Pro Max



Reefmaster RM-4K



Micro 3.0, Sea Dragon 3000F

# SeaLife®

**SEA DRAGON® flex-connect®**



For over 25 years, **SeaLife** has captured incredible memories of your undersea encounters with our award-winning cameras, **Sea Dragon** lighting and **Flex-Connect** accessories.

Where will your next underwater adventure take you?



Micro 3.0 Pro 5000 Set



RM-4K Pro 2000 Set



SportDiver Housing



# SeaLife's **easiest** and most **advanced** camera

PERMA Seal™  
Never Leak Technology

## micro3.0™

### Item SL550

The compact Micro 3.0 makes it easier than ever to capture stunning underwater photos and video. Since the camera is sealed, there are no O-rings to maintain and no possible leaks to worry about. The Easy Setup mode ensures the camera is set properly. The three wide "Piano Keys" and a large shutter button make it easy to control all camera functions so you can capture high resolution 16mp still images or record 4K Ultra-HD video with a single touch. The Micro 3.0 has three color correcting underwater scene modes plus Manual white balance to fine tune colors in all conditions.



Rugged, compact design  
with no doors or openings



The Micro 3.0 advanced features include the ability to shoot RAW images with virtually no shutter lag and rapid-fire burst mode at 10 frames per second for fast moving subjects. The high-capacity battery lasts three hours or more on a single charge. Use the Micro 3+ app to download photos and videos to your smartphone or tablet. Expandable with popular Sea Dragon photo-video lights and close-up lenses for macro photography.



2.4"/6cm hi-res display and  
large "Piano Key" controls  
for easy underwater use



Charging and file transfer  
through the waterproof  
USB port

- Permanently sealed** – no O-rings to maintain
- 16 megapixel SONY® image sensor** for sharp colorful images
- 260K hi-res 2.4" TFT color LCD**
- 4K Ultra HD Video @ 30fps and 1080p HD video @ 120fps**
- Five Land & Sea™ scene modes** with color correction
- Wireless downloading** with SeaLife Micro 3.0+ App
- Three built-in underwater color correction filters**
- 100° Wide Angle Lens** fits everything into the shot
- RAW/JPEG image format** – JPEG & DNG still image files
- Burst Shooting Mode** – Ten 16MP JPEG photos per second
- Manual White Balance** to customize color correction
- 64GB internal memory** – thousands of photos, hours of video
- Easy Setup Mode** with on-screen guide and easy menus
- Waterproof to 200ft / 60m**
- Internal 2000mAh Li-ion Battery** – 3+ hours of use
- Compact design** for easy handling and lightweight travel
- Expandable** with popular SeaLife® accessories
- Rubber Armored** – impact & shock resistant body
- Focus from 15" (38cm) to infinity** (Get closer with optional super macro & +10 close-up lenses)

Capture it  
with your phone!

For  
iPhone®  
& Android™  
Phones

**SportDiver™**

The SeaLife **SportDiver** underwater smartphone housing can encase most Android models and all iPhones from iPhone 7 & up. The free SportDiver app, available at the App Store or Play Store, captures photos and video directly to your phone's camera roll, and works with the current and prior generation of the OS. The app also allows you to control advanced camera settings, like Zoom, Lens selection, video resolution, adjust zoom, exposure, manual focus, white balance, RAW+JPEG mode, background blur (Bokeh), photo + 3 sec. video and more, as if you were using a more sophisticated underwater camera\*. The SportDiver offers fast and easy playback, and the clear back of the housing has a full unobstructed view of your screen and underwater environment.



#### Compatibility Checker



Check  
if your  
phone  
fits here



... Triple 1/4-20 tripod  
mounts to mount to  
Flex-Connect or any  
tray with standard  
tripod threads

## **SportDiver™** **Underwater Smartphone Housing** Item SL400-U

The **SportDiver** offers unique visual and audible protection features for your phone, including a vacuum pressure alarm that checks the waterproof seal integrity before your dive and a moisture sensor that alerts you in the unlikely event a leak is detected. We've produced over 20 generations of underwater cameras and housings, and SeaLife brings a wealth of experience with the design and performance of the SportDiver.



#### **Works with iPhone®, Samsung Galaxy® & most Android® phones**

**iPhone:** iPhone 7 & up

**Android:** Samsung Galaxy S9 and up, most other Android phones

**Easy control** – Large shutter lever and rear control buttons for easy operation, even with dive gloves

**Access popular camera settings** – Get creative with your shot by using advanced settings

**Shoot photos or record video** – Easily switch between modes

**Dual Leak Alarms** – Includes internal moisture alarm and internal vacuum pressure alarm

**Removable underwater color-correction filter** for bright, colorful underwater photos & videos

**Includes SeaLife SportDiver camera app** – Free download in App Store and Play Store

**Bluetooth® wireless technology** – Housing automatically connects to your smartphone

**Holding spring and rubber grip tabs** securely holds phone in place and adds shock-protection

**Triple 1/4-20 tripod mounts** – Mounts to Flex-Connect or any tray with standard tripod threads

**Cam-lock sealing mechanism** easily and securely locks waterproof door

**Powered by two AAA batteries** – over 50 hours of continuous use

**Anti-fog design** when SL911 Moisture Muncher capsule is used

**Depth rated to 130ft / 40m** – Each housing is individually depth tested

**Playback photos and videos** – App Playback mode shows full size photos & videos with vertical thumbnail strip to easily locate your shots



# The incredible ultra-compact ReefMaster RM-4K

## REEFMMASTER<sup>®</sup> RM-4K

### Item SL350

The ultra-compact ReefMaster RM-4K easily goes anywhere and is ready to capture your next dive adventure. The shape fits comfortably into your hand or mounts easily to a photo/video light like the Sea Dragon 2000F. With 4K video resolution, your videos will be ultra-sharp and rich in color while the high performance 14mp image sensor will capture brilliant still images. The high resolution 2"/5cm display allows easy aiming and quick review. The pressure locking thumb-screw seals the camera's housing down to 130'/40m.



The rugged housing protects the camera and offers a good grip



Accessory adapter allows mounting to popular action camera accessories



2"/5cm High-res color LCD display

**14 megapixel Panasonic<sup>®</sup> CMOS image sensor** for sharp colorful pictures

**4K Ultra HD Video @ 30fps and 1080p HD video @ 60 fps**

**40m/130ft compact underwater housing** with removable inner camera

**140° Fisheye Lens** – get close to your subject and still fit everything into the picture

**4-button control** for easy operation

**WiFi** to wirelessly preview, download and share pictures/videos to smart phone or tablet with free “ReefMaster” app

**Electronic video image stabilization** reduces vibration and hand movement for smoother video recording

**Expandable memory** using micro SDHC/SDXC (U3/V30) memory card up to 128GB

**Compact design for easy handling and lightweight travel**

**Focus from 12" (30cm) to infinity** (Get closer with optional super macro & +10 close-up lenses)

**Time lapse shooting at set time intervals** – saves as video file or series of still images

**Removable Li-ion rechargeable battery** (900 mAh / 3.8V / 3.42Wh for 2+ hours video or 500+ images)

**2.0" 230K Hi-res TFT color LCD**

**Two underwater color-correction modes**

**HDMI output** for direct connection to HDTV



**Lighting is one of the most important components of underwater photography. Combine the Micro 3.0 with powerful Sea Dragon lights to bring out true colors in photos and videos**

## micro 3.0™ Camera & Light Sets

### Micro 3.0 Pro Dual Beam Set

#### Item SL554

Combine the Micro 3.0 with the Sea Dragon 3000SF Pro Dual Beam Photo-Video light, and you have camera with photo/video/dive light in a compact package that's incredibly versatile and travels easy. With a simple one-button push, you can switch from the **wide 3000 lumen 120° beam** to a **narrow 1500 lumen 15° spot beam**. The light also includes two red LED's for night dives.

Includes: Flex-Connect Single Tray, Flex-Connect Grip, Sea Dragon 3000SF Pro Dual Beam light, and Micro 3.0 underwater camera.

Or choose the **SL552 Micro 3.0 Pro 3000 Set**. Includes: Flex-Connect Single Tray, Flex-Connect Grip, Sea Dragon 3000F Auto light, and Micro 3.0 underwater camera.



### Micro 3.0 Pro Duo 5000 Set

#### Item SL553

The Micro 3.0 Pro Duo 5000 Set is equipped with two Sea Dragon 2500F lights on a dual tray and two ergonomic Flex-Connect grips for comfort and adding steadiness to shooting both video and stills. The two 2500 lumen Sea Dragon lights offer more than complete coverage of the entire frame, and feature a very warm and high color rendering (CRI) for spectacular natural colors.



Includes: Flex-Connect Dual Tray, 2x Flex-Connect Grips, 2x Sea Dragon 2500F lights, Micro 3.0 underwater camera.



### ReefMaster RM-4K Pro 2000 Set

#### Item SL354

Combine the compact and easy to use ReefMaster RM-4K with the wide beam of the Sea Dragon 2000F and you have the perfect compact package for exploring reefs, wrecks and deeper dives where lighting will make your images and videos shine with color.

The Sea Dragon 2000F has an easy one button design that cycles through three light intensity settings and has a rechargeable battery that lasts an hour at full power (2000 lumens).

Includes: Flex-Connect Micro Tray, Flex-Connect Grip, Sea Dragon 2000F light, and ReefMaster RM-4K underwater camera.



## SportDiver™ Housing & Light Set

### SportDiver Pro 2500 Set

#### Item SL401-U

The SeaLife SportDiver Pro 2500 Set is a compact and lightweight underwater housing for smartphones for use down to 130 feet or 40 meters. The SportDiver can hold the iPhone 7 & up, and most Android models.

The SportDiver Pro 2500 Set includes the Sea Dragon 2500F Photo-Video Light for brilliant and colorful underwater images and video, and is accompanied with a grip and tray for smooth, steady imaging.

Includes: SportDiver Housing, Sea Dragon 2500F light, Flex-Connect Single Tray, Flex-Connect Grip.







## Add stunning colors with the Sea Dragon Underwater Universal Flash

### Sea Dragon Universal Flash Item SL963

Universally compatible with SeaLife and most other cameras using an internal flash, the Sea Dragon Flash features variable power adjustment and large controls to easily fine tune brightness and an Auto Mode that automatically adjusts brightness for optimal exposure. Compatible with SeaLife and other underwater cameras with an internal flash and 1/4"-20 tripod mount. An Ikelite® tray adapter is also available (SL997).

Includes diffuser, single tray, grip, optical cable, 7mm cable plug, and universal flash mask, and case. Flash takes 4 AA batteries (not included). Flash head only: SL9631

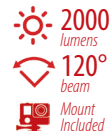


## SEA DRAGON® Underwater Lighting

### Sea Dragon 2000F Photo/Video Light Item SL677

The Sea Dragon 2000F uses COB LED technology to create a favorable color rendering that simulates natural sunlight with a color temperature of 5000k and a generous beam angle. This is a perfect combination for compact digital cameras. The 120° beam is ideal for cameras with a wide field of view. Depth rated down to 330 feet/100 meters. 60 minute run time at full power.

Includes micro tray, grip, 25Wh Li-Ion battery and charger. Also available as light head only (Item SL6770).



### Sea Dragon 2500F Photo/Video Light Item SL671

The Sea Dragon 2500F uses flat panel COB LED technology, bringing out amazing colors in underwater photos and videos. With a Color Rendering Index of 90 (100 CRI is like natural sunlight), the Sea Dragon 2500 solves the issue of muted colors in underwater photos and videos. The wide 120° beam ensures maximum lighting coverage and is ideal for cameras with a wide shooting angle like the SeaLife Micro-series or RM-4K cameras. 60 minute run time at full power.

Includes single tray, grip, 25Wh Li-Ion battery, charger and case. Also available as light head only (Item SL6712).



*Note: The beam angles for the Sea Dragon lights are shown as the true, tested "in-air" (above water) beam angle. Due to light refraction, the angle tightens to approximately 33% less in water. E.g. A topside or in-air beam angle of 120° will be 90° underwater.*





**Illuminate  
darkness with  
vibrant colors  
when you add the  
Sea Dragon**

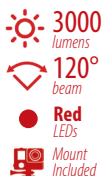


## Sea Dragon 3000F Auto Photo/Video Light

**Item SL678**

The Sea Dragon 3000F Auto delivers 3000 lumens over 120° smooth, even beam angle without a hot spot. Two red LED's emit 180 lumens, 88° wide beams "stealth mode" that won't scare away nighttime sea creatures and preserves your eye's natural night vision. Powered by a rechargeable 25Wh lithium ion battery, the light runs for a full hour at 100% power at constant brightness with its new COB LED 120° beam angle. Depth rated to 330ft / 100m. The Sea Dragon 3000F Auto also has SeaLife's Auto Flash Detect Mode and Auto Bright Mode.

Includes Flex-Connect single tray, grip, 25Wh Li-Ion battery, charger and case. Also available as light head only (Item SL6780).



**Bring out bright,  
brilliant colors  
with the  
Sea Dragon 5000+**



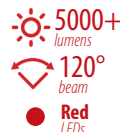
**NEW**

## Sea Dragon 5000+

**Item SL680**

The compact Sea Dragon 5000+ with Color Boost™ Photo-Video light is a powerful photo-video, dive light that replenishes lost colors underwater by combining red and white light frequencies for a balanced, warm effect. With a simple one-button push, you can switch from a brilliant 5000 lumen beam to the Color Boost feature, adding warmth by using the light's proprietary red LED's to a warm color temperature of 3700 Kelvin.

Brightness output can also be adjusted to 6000 lumen, and 6000 lumens with Color Boost (4000K Color temp.), 3000 lumen, 1500 lumen, and Red-only "Stealth" mode, while the two red LEDs alone are perfect for night dives.



## Sea Dragon Pro Dual Beam Photo/Video Light

**Item SL679**

The compact Sea Dragon 3000SF Pro Dual Beam Photo-Video light has a large COB LED, delivering 3000 lumens in an even 120° wide beam. The light offers an impressive 90 CRI (color rendering index) with a proprietary COB LED array that replicates natural sunlight (A CRI of 100 would be just like natural sunlight). With a simple one-button push, the underwater photographer can switch from the wide 120° beam to a narrow 1500 lumen 15° spot beam. For imaging, the spot beam offers many creative opportunities such as to create a narrowly focused snoot or stage spotlight effect.

Includes Flex-Connect single tray, grip, 25Wh Li-Ion battery, charger and case. Also available as light head only (Item SL6791).



sealife-cameras.com



Bring brilliant, vivid color into your underwater photos with Sea Dragon Lighting Sets



**SEADRAGON® Duo Lighting Sets**

## Sea Dragon Duo 3000F Flash Set

**Item SL690**

When shooting with the SeaLife DC-Series or other cameras with a built-in flash, the Duo 3000F Light and Flash set is the perfect all-purpose lighting system. The set combines the Sea Dragon Flash with the Sea Dragon 3000F Auto, which senses the strobe and shuts the light off momentarily to give you a brilliant and shadow-free image. Includes Pro Duo Travel Case.



## Sea Dragon Duo 5000F Lighting Set

**Item SL989**

The powerful Sea Dragon Duo 5000F underwater lighting set packs an astounding 5000 lumens using two Sea Dragon 2500F COB LED lights mounted on a Flex-Connect Dual Tray. The ergonomic grips increase camera stability while the dual lights increase beam angles even further. Includes Pro Duo Travel Case.



## Sea Dragon Duo 6000F Lighting Set

**Item SL691**

The Sea Dragon Duo 6000F underwater lighting set packs an astounding 6000 lumens using two Sea Dragon 3000 COB LED lights mounted on a Flex-Connect® Dual Tray. The ergonomic grips increase camera stability while the dual lights increase beam angles even further. Includes Pro Duo Travel Case.



**Sea Dragon compact dive lights**



## Sea Dragon Mini 900S Dive Light

**Item SLKIT06 / SL653**

14° spot beam 900 lumens



With the Mini 900S Underwater Dive Light, the high intensity spot beam meets compact design. The light features a 14° beam and three one-handed access power levels plus emergency one-second and SOS flash. A heavy duty BC lanyard and clip is included. The light runs on a single 18650 rechargeable Li-ion battery, or on 2 single-use CR123 batteries.

**Item SLKIT06:** Includes Sea Dragon Mini 900S Dive Light, Lanyard with BCD Clip, 2600 mAh 18650 Li-Battery, 18650 USB Battery Charger

**Item SL653:** Includes Sea Dragon Mini 900S Dive Light, Lanyard with BCD Clip

## Sea Dragon Mini 1300S Dive Light

**Item SLKIT08 / SL654**

8° spot beam 1300 lumens



The Sea Dragon Mini 1300S Underwater Dive Light gives you a tight, high intensity long-range beam for maximum distance and brightness. The Mini 1300 features a 8° spot beam and three easy one-handed access power levels plus emergency one-second and SOS flash. A heavy duty BC lanyard and clip is included. The light runs on a single 18650 rechargeable Li-ion battery, or on 2 single-use CR123 batteries.

**Item SLKIT08:** Includes Sea Dragon Mini 1300S Dive Light, Lanyard with BCD Clip, 2600 mAh 18650 Li-Battery, 18650 USB Battery Charger

**Item SL654:** Includes Sea Dragon Mini 1300S Dive Light, Lanyard with BCD Clip

[sealife-cameras.com](http://sealife-cameras.com)



# The Fluoro Experience



800  
lumens  
65° + 15°  
beam + spot

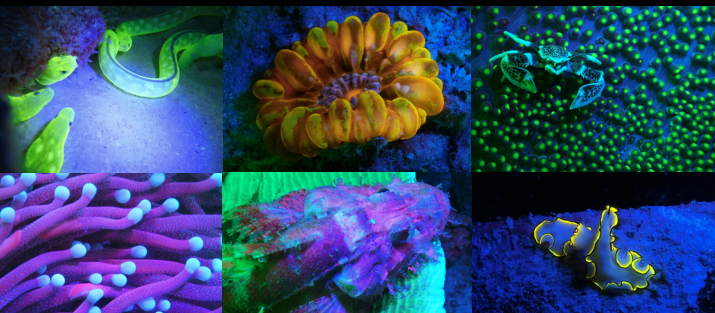


The Fluoro-Dual Beam includes barrier filters to filter out the residual presence of blue color emitted by the light.

## Sea Dragon Fluoro-Dual Beam

Item SL673

The **Sea Dragon Fluoro-Dual Beam** emits a powerful blue light and has an integrated dichroic filter, creating the optimal light wavelength to excite underwater life. Switchable beams quickly adjust with the push of a button from blue fluoro 65° flood to white 800 lumen 15° spot.



**Flex-Connect** is the **fastest and easiest way to connect lights and accessories to underwater cameras.** You'll love the **balanced feel and comfort**



## flex-connect®

### Universal Trays, Mounts, Grips and Flex Arms

Built with fiber-reinforced polycarbonate and marine grade stainless steel for maximum holding strength, Flex-Connect easily "clicks" into place, underwater or on land, and can be disassembled with the push of a button. Best of all, you'll notice a very comfortable, stable and balanced feel of your camera set.

Flex-Connect allows you to transform your camera from compact to full-featured in just seconds, a quick and easy way to adjust to any dive environment.



## Adapter for GoPro® Cameras

Item SL996

Mount a GoPro camera to Flex-Connect accessories. Ideal for mounting a GoPro directly above your DC-series or other underwater camera using the Flex-Connect SL991 Cold Shoe Mount.



Enhance your underwater photography with **Flex-Connect** Trays, Mounts, and Flex Arms to easily expand your camera set



**flex-connect®**

## Flex Arm

Item SL9901

Put light exactly where you want it. Flex Arms feature 100° of bending motion, and add 7 inches of length. The arms articulate quietly and up to two can be combined for added length.

Add up to two Flex Arms per side



## Handle

Item SL998

Use a powerful Sea Dragon Light as a handheld dive light by connecting it to the ergonomic Flex-Connect Handle.

The base features stainless 1/4-20 threads to attach a D-ring for a lanyard, or mount a camera.



## YS Adapter

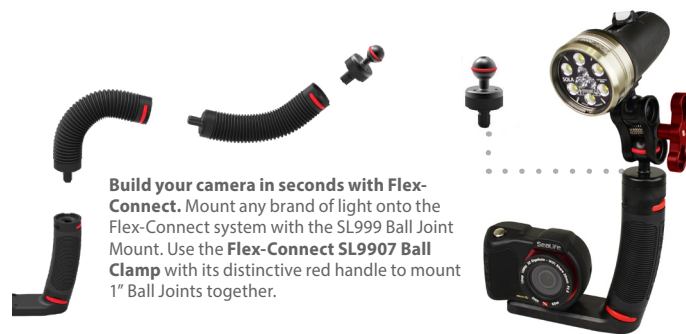
Item SL994

Connect any underwater light or flash that uses a YS Mount to Flex-Connect accessories including Flex Arms, Grips, Trays, and Cold Shoe Mount.



## Ball Joint Adapters

Connect Sea Dragon lighting and Flex-Connect accessories to any underwater camera using a standard 1"/25mm ball joint mounting system, or connect any brand light with a ball joint mount to Flex-Connect accessories.



**Build your camera in seconds with Flex-Connect.** Mount any brand of light onto the Flex-Connect system with the SL999 Ball Joint Mount. Use the **Flex-Connect SL9907 Ball Clamp** with its distinctive red handle to mount 1" Ball Joints together.

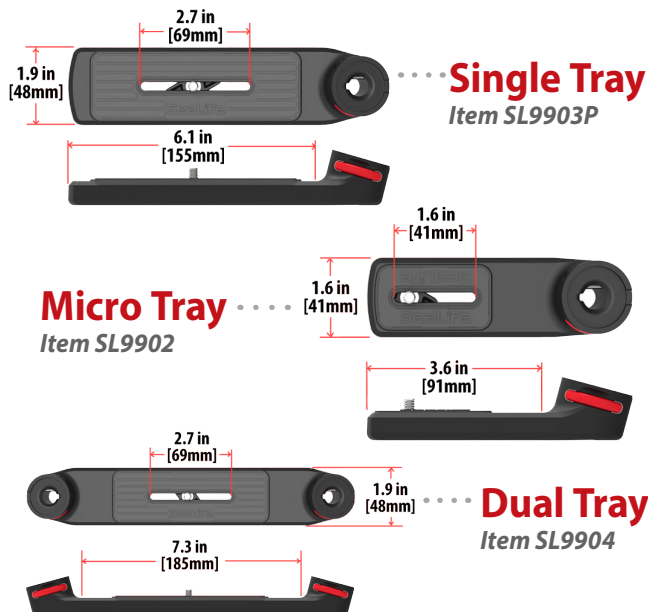
## 8"/20cm Rigid Ball Arm

Item SL9909

Rigid, 8"/20cm anodized aluminum 1-inch ball arm. Fits to 1"/25mm ball clamps for a rigid mounting solution. Use with SL9907 clamp and SL995, SL999 ball joints.







The Single and Dual tray are wide enough to accommodate almost any camera or housing, while the compact Micro Tray is perfect for adding light and stability to your ultra-compact or action camera.

## AquaPod Mini

Item SL912

The SeaLife AquaPod Mini allows you to shoot from creative angles, capture close ups at a safe distance, and take self-portraits. The AquaPod Mini extends from 15.5in/39cm to 38in/97cm. It fits all cameras with a standard tripod mount and includes an adapter for GoPro® cameras.



The Sea Dragon Mini 1000F light fits to the AquaPod with the included mount.



Carry your gear  
with **Ease and  
Comfort**

*This entire set-up  
will fit into the  
Photo Pro Backpack.*

## SeaLife Photo Pro Backpack

Item SL940

For divers who want a camera case that travels well, and is compact enough to fit into the overhead bin or under the seat in small island-hopping commuter aircraft. The SeaLife Photo Pro backpack offers a complete storage solution for your photo gear. Featuring a waterproof interior to keep surrounding compartments dry and to keep moisture out.



*Fits a camera & housing with  
several lights or strobes, such  
as the Micro 3.0 5000 Duo Set,  
lenses, batteries & charging  
accessories.*



*Separate pocket  
for a tablet or small  
notebook PC, and deep  
side pockets.*

## Sea Dragon EVA Case

Item SL942

Thermo-molded EVA case for your camera, light and other accessories. Protective, yet compact. Designed to hold your essential gear and easily fit into your luggage or carry-on bag.



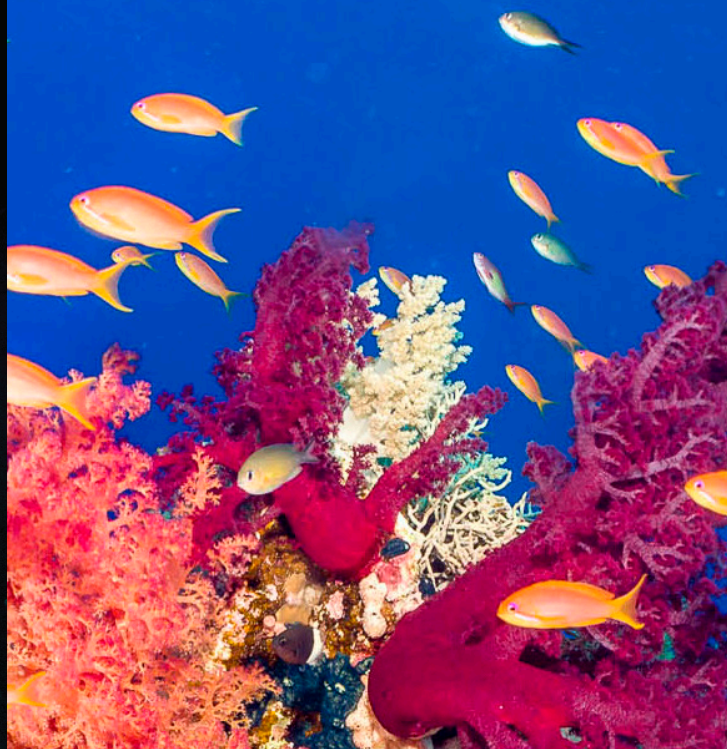




## Super Macro Lens for Micro Series & RM-4K

### Item SL571

The Super Macro Lens captures the intricate details of your photo and video subjects from 3.5" to 7" (9cm to 18cm). Features 2-element optical glass wet lens with anti-reflective coating and anodized aluminum construction with rubber press-on lens mount. Includes two removable focus distance sticks, safety lanyard and protective pouch. Fits all SeaLife Micro-series and ReefMaster RM-4K camera models.



## Micro Wide Angle Dome Lens

### Item SL052

The SeaLife Micro-series Wide Angle Lens increases the camera's field of view by 43% and allows for 3x closer shooting distance. For the SeaLife Micro 3.0, the lens angle is increased from 100° to 143° and shooting distance is reduced from 15"/38cm to 5"/13cm. The 0.7x dome lens high-grade optical design improves overall image quality and edge sharpness. Fits all SeaLife Micro-series and ReefMaster RM-4K camera models.



## Close Up Lens for Micro Series & RM-4K

### Item SL572

This +10 Diopter Close Up Lens cuts the close focus range to less than half (approximately 6"-24" or 15cm to 60cm). Features a single element optical grade wet lens with anti-reflective coating and anodized aluminum construction surrounded by a durable rubber press-on lens mount. Includes safety lanyard and protective pouch. Fits all SeaLife Micro-series and ReefMaster RM-4K camera models.



## Lens Caddy for Micro, ReefMaster & DC Lenses

### Item SL091

The SeaLife Lens Caddy mounts SeaLife DC, Micro and RM-4K series lens to a camera or tray using the standard 1/4-20 tripod screw or to any grip/arm up to 1.8" (45mm) in diameter using a sturdy hook & loop nylon strap. The Lens Caddy holds any DC series lens, or Micro and RM-4K series lenses SL571 & SL572.



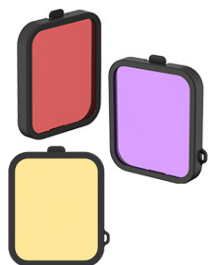


## Accessories

### SportDiver Color Filters

**Item SL40007 (Red), Item SL40005 (Yellow), Item SL40003 (Magenta)**

Removable underwater color-correction filter for the SportDiver that restores natural underwater colors. The Red and Yellow filters are designed for blue water conditions when not using an external light, or when using with a Fluoro light. Magenta Color-Correction Filter for green water color conditions.



### Sea Dragon Red Fire Filter

**Item SL9832**

Aids in underwater navigation in darkness so to keep the eyes aware and dilated, this feature also prevents frightening nocturnal sea creatures. Presses on/off underwater and works with all Sea Dragon Lights with 1200 or more lumens (Not for imaging or Sea Dragon 4500/5000).



### SeaLife Gear Retractor

Two sizes for compact cameras & compact lights; and large size for larger cameras, housings and lights. The retractors offer a quick-release clip feature that lets you quickly remove the attached device. **SL925: 32"** (81cm) with 9oz. (255g) retraction force. 60lb. (27.2kg) breaking strength. **SL926: 42"** (107cm) with 12oz. (340g) retraction force. 80lb. (36kg) breaking strength.



### Universal Float Strap

**Item SL920**

Floats all SeaLife cameras as well as most other brands of waterproof cameras and other portable waterproof devices. Recommended for the negatively buoyant Micro Series and RM-4K cameras.



### Screen Shield™ Screen Protector

**Items SL3506(2"), SL5012 (2.4"), SL4005 (6.8")**

Waterproof screen protector for the Micro 3.0, RM-4K, SportDiver Housing, and other compact cameras with a screen size of 6.8", 2.4", 2" or smaller. The nano coating repels water and keeps the screen free of fingerprints while protecting against scratches.



There's more! Visit [www.sealife-cameras.com](http://www.sealife-cameras.com) to see the full range of SeaLife accessories.

### Moisture Muncher

**Item SL911**

Moisture Muncher capsules fit inside SeaLife underwater cameras and smartphone housings and absorb remaining internal moisture. Each tube absorbs its own weight in moisture; when the crystals turn from blue to pink, full absorption has been reached. Each package contains ten (10) 1.5g capsules containing color indicating silica gel.



### 25Wh Li-ion Battery for Sea Dragon 1200-3000

**Item SL9831**

Rechargeable lithium ion battery (3400mAh, 7.4V 25Wh) for Sea Dragon 1200, 1500, 2000, 2100, 2300, 2500, 3000, Pro Dual Beam Photo/Video Lights, and Fluoro-Dual Beam. Includes protective cap.



### ReefMaster RM-4K Li-ion Battery

**Item SL3504**

Rechargeable 3.8V 900mAh 3.42Wh lithium ion battery for the ReefMaster RM-4K camera. Powers camera for 2+ hours of operation. Can be charged inside the camera through a USB cable.



### 18650 3500 mAh Li-ion Battery

**Item SL9828**

XTAR 18650 3.6V 3500mAh Li-ion rechargeable battery for Sea Dragon Mini 1300S, 1000F, 900S, 650S/F, Fluoro and other brands adds approximately 30% additional run time over 2600mAh 18650 cell.



### 18650 USB Mini Charger

**Item SL9825**

Charges 18650 and other Li-ion batteries. Connects to any 5V USB wall charger. Displays charging status and current. Ultra-compact design for easy travel. Includes USB cable and storage pouch. Battery not included.



### 50Wh Battery for Sea Dragon 4500F, 5000F, and 5000+ Lights

**Item SL67510**

Rechargeable lithium ion battery (3400mAh, 7.4V 50Wh) for Sea Dragon 4500F, 5000F, and 5000+ Lumen Lights.










Scan with any smartphone to see  
the latest **videos**, **products** and **more**.



# SeaLife®

97 Foster Road, Suite 5  
Moorestown, NJ 08057 USA

[sealife-cameras.com](http://sealife-cameras.com)

   **SeaLifeCameras**