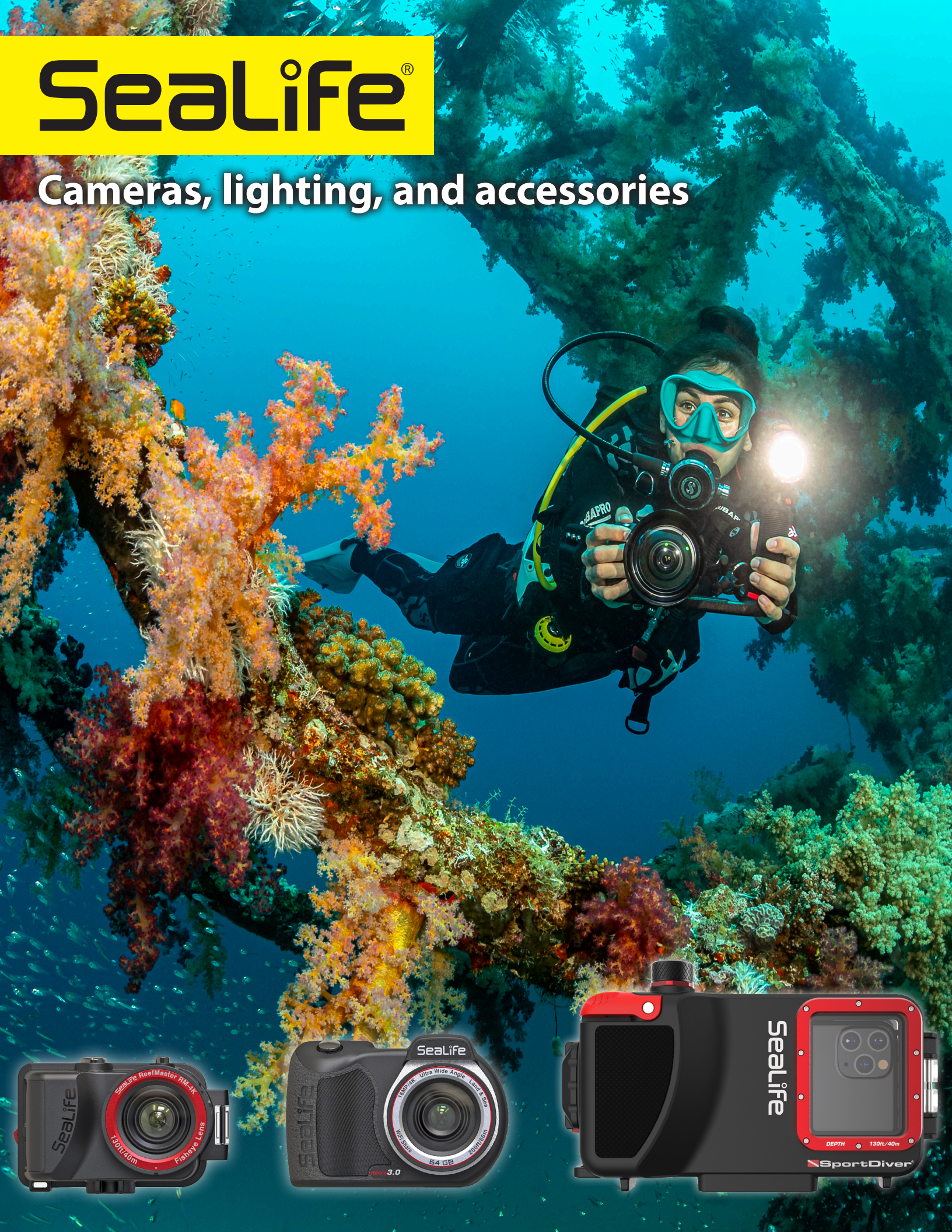


SeaLife®

Cameras, lighting, and accessories



SeaLife®



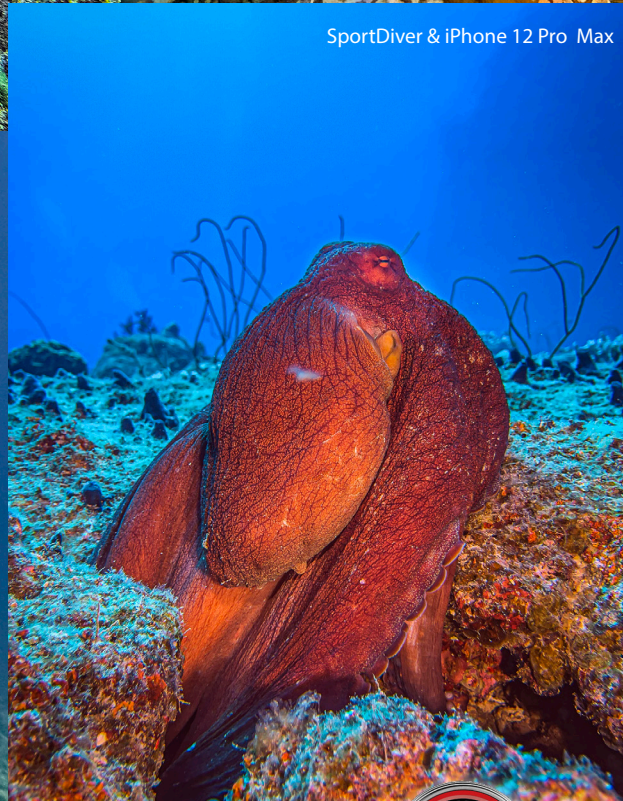
Micro 3.0, Sea Dragon 3000F



SportDiver & iPhone 12 Pro Max



Micro 3.0, Sea Dragon 3000F



Micro 3.0 Pro 5000 Set



RM-4K Pro 2000 Set



SportDiver & iPhone 14 Pro Max



SportDiver & iPhone 14 Pro Max, Sea Dragon 2500



Reefmaster RM-4K



Micro 3.0, Sea Dragon 3000F



SportDiver Smartphone Housing

For over 25 years, **SeaLife** has captured incredible memories of your undersea encounters with our award-winning cameras, housings, **Sea Dragon** lighting and **Flex-Connect** accessories.

Where will your next underwater adventure take you?

SeaLife®
 **SEADragon**® flex-connect®

SportDiver®



Capture it with your phone!

For
**iPhone®
& Android™**
Phones

Compatibility Checker



Check
if your
phone
fits here

The SeaLife **SportDiver** underwater smartphone housing can encase most Android™ models and all iPhones® from iPhone 7 & up. The free SportDiver app, available at the App Store or Play Store, captures photos and video directly to your phone's camera roll, and works with the current and prior generation of the OS. The app also allows you to control advanced camera settings, like Zoom, Lens selection, video resolution, adjust zoom, exposure, manual focus, white balance, RAW+JPEG mode, background blur (Portrait), photo + 3 sec. video and more, as if you were using a more sophisticated underwater camera*. The SportDiver offers fast and easy playback, and the clear back of the housing has a full unobstructed view of your screen and underwater environment.



*Available Camera settings depend on available features on your phone. Please download free app from app store to check what settings are available for your specific model.

SportDiver® Underwater Smartphone Housing *Item SL400-U*

The **SportDiver** offers unique visual and audible protection features for your phone, including a vacuum pressure alarm that checks the waterproof seal integrity before your dive and a moisture sensor that alerts you in the unlikely event a leak is detected. We've produced over 20 generations of underwater cameras and housings, and SeaLife brings a wealth of experience with the design and performance of the SportDiver.



SeaLife SportDiver app with auto & manual controls

• Triple 1/4-20 tripod mounts to mount to Flex-Connect or any tray with standard tripod threads



TECHNICAL FEATURES

Works with iPhone®, most Samsung Galaxy® & other Android™ phones

iPhone: iPhone 7 & up

Android: Most Android phones, see online compatibility chart

Easy control – Large shutter lever and rear control buttons for easy operation, even with dive gloves

Access popular camera settings – Get creative with your shot by using advanced settings

Shoot photos or record video – Easily switch between modes

Dual Leak Alarms – Includes internal moisture alarm and internal vacuum pressure alarm

Removable underwater color-correction filter for bright, colorful underwater photos & videos

Includes SeaLife SportDiver camera app – Free download at App Store and Play Store

Bluetooth® wireless technology – Housing automatically connects to your smartphone

Holding spring and rubber grip tabs securely holds phone in place and adds shock-protection

Triple 1/4-20 tripod mounts – Mounts to Flex-Connect or any tray with standard tripod threads

Cam-lock sealing mechanism easily and securely locks waterproof door

Powered by two AAA batteries – over 50 hours of continuous use

Anti-fog design when SL911 Moisture Muncher capsule is used

Depth rated to 130ft / 40m – Each housing is individually depth tested

Playback photos and videos – App Playback mode shows full size photos & videos with vertical thumbnail strip to easily locate your shots

SportDiver® Housing & Light Set

SportDiver Pro 2500 Set *Item SL401-U*

The SeaLife SportDiver Pro 2500 Set is a compact and lightweight underwater housing for smartphones for use down to 130 feet or 40 meters. The SportDiver can hold the iPhone 7 through the latest iPhone Pro Max models, and most Android models.

The SportDiver Pro 2500 Set includes the Sea Dragon 2500F Photo-Video Light for brilliant and colorful underwater images and video, and is accompanied with a grip and tray for smooth, steady imaging.

Includes: SportDiver Housing, Sea Dragon 2500F light, Flex-Connect Single Tray, Flex-Connect Grip.





micro3.0™

Item SL550

Experience the undersea world with the permanently sealed, flood-proof SeaLife Micro 3.0 underwater camera. The easy-to-use Micro 3.0 is ready to dive right out of the box. No O-rings to maintain, and no need to worry about leaks. Just charge it and go!

The brilliant performance of the Micro 3.0 comes from the 16 megapixel SONY™ CMOS sensor that captures amazing color and detail. Small and ergonomic, the Micro 3.0 camera is easy to handle underwater, operating with three wide “Piano Key” controls. An Easy Setup Guide provides a fast and intuitive way to select a color correction mode for your diving environment, allowing you more time diving and less time scrolling through menus.



micro3.0™ Underwater Camera



The **Micro 3.0** is **compact, lightweight** and **comfortable to handle** in the water with its slightly negative buoyancy.



WiFi to wirelessly view, download and share pictures and videos to smart device using the **SeaLife Micro 3+ app**



2.4" LCD display and "Piano Key" controls for easy underwater use

TECHNICAL FEATURES

Permanently sealed: no O-rings to maintain

16 megapixel SONY® image sensor for sharp colorful images

4K Ultra HD Video @ 30fps and **1080p HD video @ 120fps**

Focus from 15in / 40cm to infinity

260K hi-res 2.4" TFT color LCD

Internal 2000mAh Li-ion Battery: 3+ hours of use

Five Land & Sea™ scene modes with color correction

Wireless downloading with SeaLife Micro 3.0+ App

Three built-in underwater color correction filters

100° Ultra-Wide Angle Lens fits everything in the shot

RAW/JPEG image format: JPEG & DNG still image files

Burst Shooting Mode: 10 16MP photos per second

Manual White Balance to customize color correction

64GB internal memory: thousands of photos, hours of video

Easy Setup Mode with on-screen guide and easy menus

Waterproof to 200ft / 60m

Compact design for easy handling and lightweight travel

Expandable with popular SeaLife® accessories

Rubber Armored: impact & shock resistant body

micro3.0™ Camera & Light Sets



Micro 3.0 Pro 3000 Set

Item SL552

Ideal for colorful and sharp stills and videos, the Micro 3.0 Sea Dragon Pro 3000 Set includes the Sea Dragon 3000F Photo-Video Light, Micro 3.0 Camera, Flex-Connect® Single Tray, and Grip for stability and handling. The Sea Dragon 3000F Light has a Color Rendering Index of 80, 5000k color temperature to simulate natural sunlight, adding beautiful colors to underwater photos and videos.

Item SL554: Micro 3.0 Pro Dual Beam Set (shown at top)



Micro 3.0 Pro Duo 5000 Set

Item SL553

The Micro 3.0 Pro Duo 5000 Set combines two sun-like Sea Dragon 2500F Lights with the Micro 3.0 camera to create the a versatile package for the underwater photographer. The set packs an astonishing 5000 lumens, capturing rich and natural color in underwater photos and videos while the ergonomic Flex-Connect® Dual Tray, Grips, and Flex Arms provide stability and easy handling. Dual lighting also minimizes shadows in your photos and videos.

REEFMASTER[®]

RM-4K

Compact, ultra-high definition underwater camera

Capture **vibrant 14mp still images and brilliant 4K video** with a ultra-compact camera especially designed for the underwater environment. The **ReefMaster RM-4K** makes it possible. Waterproof to 130ft/40m, the ReefMaster RM-4K underwater camera is a game changer in underwater imaging; the housing is robust and designed to be hand-held, tray mounted or worn on your head, mask or body. Unlike cheaper plastic box-style enclosures included with popular action cameras, the unique ReefMaster Dive housing assures consistent waterproof performance with its "Pressure-Lock" sealing system.

The ReefMaster RM-4K pairs easily with a variety of **Sea Dragon Photo/Video Lights**, to add vibrant colors and detail.



The RM-4K features a universal 1/4-20 stainless tripod mount to mount to Flex-Connect and other trays. . . .



The available action camera accessory mount (SL9818) allows you to mount the RM-4K to a wide range of commercially available accessories.

The "Pressure-Lock" thumb screw sealing system ensures your camera stays dry.

REEFMASTER[®] RM-4K

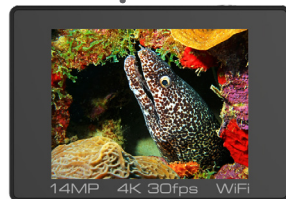
Ultra Compact Underwater Camera

Item SL350

Experience unparalleled ease-of-use with the ReefMaster RM-4K, featuring a pocket-sized design with a 14 megapixel Panasonic[®] CMOS image sensor and ultra-high definition 4K video. The compact, portable design ensures you can take the ReefMaster anywhere. The built-in Fisheye lens allows you to closely approach your subject while still keeping everything in the picture. And with SeaLife's know-how in underwater lighting, you'll easily be able to pair your RM-4K with a variety of Sea Dragon Photo/Video lights for any underwater scene or situation.



Removable, compact inner camera features a 3.0" TFT color LCD screen



TECHNICAL FEATURES

14 Megapixel Panasonic[®] CMOS image sensor for sharp, colorful pictures

4K Ultra HD Video at 30fps and 1080p HD Video at 60fps

40m/130ft Compact Underwater Housing

Humidity Control with replaceable Moisture Muncher dry capsules

Wide Angle Fisheye Lens to get close to your subject & get everything in the picture

2.0" TFT color LCD Display to keep you on your subject and for quick review of your underwater adventure

Waterproof to 130ft / 40m using "Pressure-Lock" thumb screw sealing system

Easy 4 button controls for easy operation

WiFi to wirelessly preview, download and share pictures & videos to smart phone or tablet with a free app from Google or Apple

Expandable memory with micro SDHC memory card up to 128GB

Compact design for easy handling and lightweight travel

Removable Li-ion rechargeable battery
(900 mAh / 3.8V / 4.2Wh for 2+ hours video or 500+ images)

Focus from 12" (30cm) to infinity – optional Macro Lenses available

Time lapse shooting at set time intervals – saves as video file or series of still images

Expandable with one or more SeaLife Sea Dragon Photo/Video Lights

REEFMASTER[®] RM-4K Camera & Light Set



ReefMaster RM-4K Pro 2000 Set Item SL354

Add the Sea Dragon 2000F Photo/Video Light to the RM-4K, and shoot vivid underwater colors in both still images and videos. The wide beam angle of the Sea Dragon 2000 complements the camera for nearly complete coverage of the shooting angle. The set includes the RM-4K camera, Flex-Connect Micro Tray, Grip, and Sea Dragon 2000F light.





SEA DRAGON®

Photo/Video Lights & Strobes

With SeaLife's **Sea Dragon** lights, you'll get the **brightness, color rendering & temperature**, and **beam angle** to produce **magazine quality stills and brilliant underwater video.**



Pro Tip: Best Foreground Subjects with Interesting Backgrounds *By Tobias Friedrich. Fiji.*

Great underwater images start with capable underwater photo-video lights to illuminate the foreground and also an interesting background. When you're looking for subjects to photograph, try to find a coral reef as a background setting, and add a foreground subject such as your dive buddy or these Anthias.

Equipment: SeaLife Micro 3.0, Deep Water White Balance, Sea Dragon 3000F.

Tobias Friedrich started taking underwater photos in 2007. Since then his images have been published in prestigious scuba diving magazines such as Sport Diver, Unterwasser, Tauchen, Scuba Diver, Through The Lens and many others.



Using two powerful photo/video lights in your setup will ensure your ability to light your scene as best as possible.



For more underwater photography tips, visit our website www.sealife-cameras.com

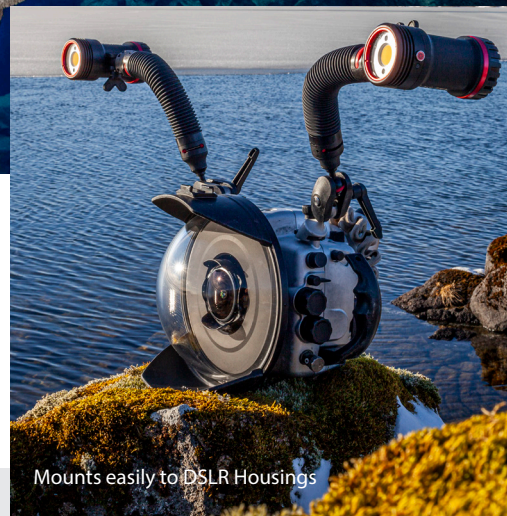


Sea Dragon 5000+ with Color Boost™

NEW



Sea Dragon 5000+
Item SL680



Mounts easily to DSLR Housings

Features:

5000-6000 lumen white flood COB LED (90 CRI, color rendering index)

Easy Mode (Default): 5000 lumens > 5000 lumen Color-Boost > 3000 lumens > 1500 lumens > Red 220 lumens

Advanced Mode: 5000 lumens > 5000 lumen Color-Boost > 6000 lumens (returns to 5000 lumens after 2 minutes) > 6000 lumen Color Boost (returns to 5000 lumens Color Boost after 2 minutes) > 3000 lumens > 3000 lumen Color Boost > 1500 lumens > Red 220 Lumens

SOS and Emergency Blinking Mode (White Light)

120° beam angle above water (90° underwater)

Depth rated to 330ft / 100m

The Sea Dragon 5000+ includes: YS Mount, Flex-Connect YS Adapter, 1" ball joint adapter, 50Wh 3400mAh 7.4v Li-ion rechargeable battery, AC Power Adapter & Charging tray, International plug adapters (US/EU/UK/AU), Spare O-rings, O-ring lubricant, O-ring removal tool, and Protective Neoprene Sleeve.

The Sea Dragon 5000+

photo-video light features 5000 lumens in a smooth, consistent 120° wide beam. A photo and video friendly 90 CRI (color rendering index) COB LED array simulates natural sunlight allowing the user to capture vibrant colors and sharp details in underwater photos and videos that otherwise would be left unseen.

The 5000+ light's **new patent-pending SeaLife Color-Boost™** mode combines specific red and white light frequencies producing a warm and vibrant underwater color effect. Red is the first color in the visible light spectrum filtered out by water. Color-Boost™ replenishes the lost red colors and offers a variety of color tuned settings for varying conditions.

The easy, one-button operation powers on the light, adjusts brightness and activates the Color-Boost mode. The light powers on at 5000 lumens of white light at a 5000K color temperature. Pushing the mode button once adds Color Boost and warms the color temperature to 3700K. The light's two red LEDs allow visibility while conserving power during night dives.

The Sea Dragon 5000+ also features an **"Advanced Mode"** with more brightness settings including more Color-Boost options and a 2-minute 6000 lumen brightness setting. The light's default setting is **"Easy Mode"**.



Sea Dragon 2000F

Item SL677

The new Sea Dragon 2000F Photo/Video Light delivers 2000 true lumens and a smooth, even 120° wide beam angle. This revolutionary COB LED technology produces an 80 CRI (color rendering index) that mimics natural daylight.

Most other LEDs have 70 CRI, missing wavelengths of the visible light spectrum. Uncover colorful reefs and hidden sea creatures with this photo/video light. Includes Flex-Connect Micro tray and grip.

Item SL6770: Sea Dragon 2000F Light Head



Sea Dragon 2500F

Item SL671

The Sea Dragon 2500F uses flat panel COB LED technology to closely mimic natural sunlight, bringing out amazing colors in underwater photos and videos.

With a Color Rendering Index of 90, the Sea Dragon 2500F solves the issue of dark, blue underwater photos and videos by adding brilliant light down to 330 feet/100 meters.

Item SL6712: Sea Dragon 2500F Light Head

Item SL989: Sea Dragon Duo (2x2500) 5000F Set



Sea Dragon Flash

Item SL963

Universally compatible with SeaLife and most other cameras using an internal flash, the Sea Dragon Flash features variable power adjustment and large controls to easily fine tune brightness.

In **Auto Mode**, the flash will automatically adjust brightness for optimal exposure. The Sea Dragon Flash automatically “learns” your camera’s pre-flash.

Includes optical cable, 7mm cable plug, universal flash link adapter, diffuser, single tray, grip and case.

Item SL9631: Sea Dragon Universal Flash Head

Item SL988: Sea Dragon Duo (2x) Flash Set



The diffuser provides a wide 100° beam, spread evenly, preventing hot spots.

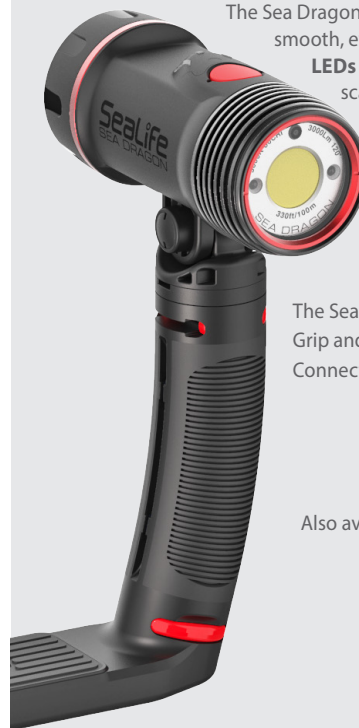
Sea Dragon 3000F Auto

Item SL678

The Sea Dragon 3000F Auto delivers 3000 lumens over 120° smooth, even beam angle without a hot spot. **Two red LEDs** emit a 88° wide “stealth mode” beam that won’t scare away nighttime sea creatures and preserves your eye’s natural night vision. Powered by a rechargeable 25Wh lithium ion battery, the light burns for a full hour at 100% power at constant brightness with its new COB LED 120° beam angle. Depth rated to 330ft / 100m.

The Sea Dragon 3000F Auto includes a Flex-Connect Grip and single tray. Easily expandable with Flex-Connect Grips, Arms, and Trays.

Also available as a light head (SL6780).



Two red LEDs create a “stealth mode” beam.

SeaLife’s Auto Modes

Select the **Auto Bright Mode** and the 3000F light’s photocell light sensor will automatically regulate brightness based on proximity to the object in 10-step brightness levels; look at something close like a gauge or your computer, and the light will reduce to 10% brightness output; look at a long distance, and the light automatically adjusts to full power.

The **Auto Bright Mode** can be easily over-riden if a constant brightness level is preferred by simply selecting the 100%, 50% or 25% brightness through the main control button.



SL690

The Sea Dragon 3000F Auto’s **Auto Flash Detect Mode** turns the light off for one second when an external flash is detected. This assures a well lit photo and prevents shadows in your images. Auto Flash Detect Mode can also be turned off if this feature is not desired.

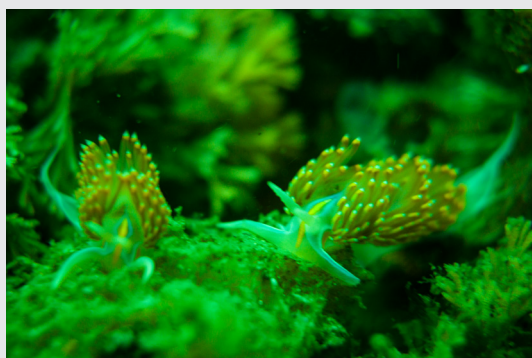


Lighting, whether by strobe or LED, is the single most important underwater imaging feature next to your camera.

With SeaLife's Sea Dragon lights, you'll get the brightness, color rendering, temperature, and beam angle to produce amazing magazine quality stills and brilliant underwater video.



The Sea Dragon 3000F uses a flat panel COB LED array that closely mimics natural sunlight.



Without Photo/Video Light



With Photo/Video Light



Pro Tip: "Artificial lighting is essential to bring out vibrant color and crisp contrast in underwater photos. These colors are lost as we dive deeper, so the flash or light illuminates the colors otherwise lost in a sea of blue. Subjects close to the camera will benefit most."

- Brent Durand
Professional Underwater Photographer



SL553

SEA DRAGON®

Pro Dual Beam

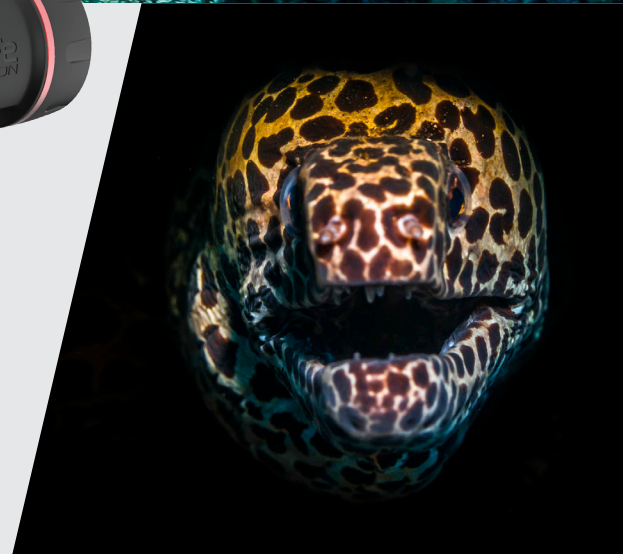


Sea Dragon Pro Dual Beam Item SL679

Ultimate versatility with a light that works for all imaging and lighting needs underwater!

The Sea Dragon Pro Dual Beam offers 3000 brilliant, color friendly lumens over a wide 120° beam angle. Quickly switch to a 1500 lumen 15° spot beam for a snoot or spotlight photography effect or reaching longer distances. Brightness and beam angles are easily adjusted with a quick push of a button. The light includes two 180 lumen red 88° LEDs that won't scare away nighttime sea creatures while preserving your eye's natural night vision.

The Sea Dragon Pro Dual Beam includes a powerful 3400 mAh Li-ion battery for a 60-minute run time at full power. Easy one-button operation. Includes Flex-Connect grip and tray for mounting to any camera with standard 1/4-20 tripod threads. Easy to expand with Flex-Connect™ system of trays, grips and flex arms.



Finally, a true do-it-all underwater photo-video-dive light.

Sea Dragon Pro Dual Beam Features:

3000 lumen white flood COB LED (90 CRI, color rendering index)

1500 lumen white spot LED (70 CRI)

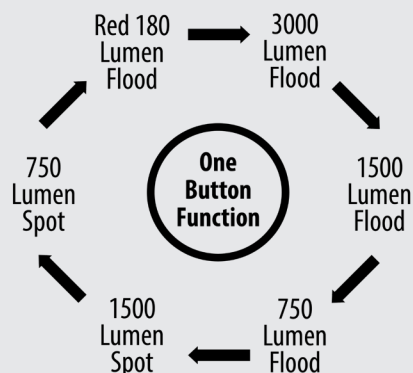
100% Wide, 50% Wide, 25% Wide, 100% Spot, 50% Spot, Red, SOS and Emergency Blinking Mode

120° beam angle above water (90° underwater)

Wide Beam: 60 minute run time (full power); up to 4 hours at 25% power (using 25Wh Li-ion rechargeable battery pack)

Narrow Beam: 80 minute run time (full power); up to 2.6 hours at 50% power (using 25Wh Li-ion rechargeable battery pack)

Depth rated to 330ft / 100m



Use the narrow 15° spot beam to create unique lighting effects on your subject.

Two red LEDs emit 180 lumens.

Wide 120° COB flood beam with photo-friendly CRI of 90



Compact/Handheld Lights

Sea Dragon Mini 900S

Item SLKIT06

With the Sea Dragon Mini 900 Underwater Dive Light, a high intensity long-range beam meets ultra-compact design. The Mini 900 features a 14° spot beam and three easy one-handed access power levels plus emergency one-second and SOS flash. A heavy duty BC lanyard and clip is included. The light runs on two CR123 or a single rechargeable 18650 Li battery.

Includes 18650 2600mAh 3.7V battery, 18650 USB Battery Charger, lanyard with BC clip, spare O-rings and lube.

Item SL653 - without battery & charger.

SPECIAL FEATURES

CREE XM-L2 T6 LED

100%, 50%, 25%, one second blink, emergency SOS

14° beam angle (10.5° underwater)

120 minute run time (full power); up to 8 hours at 25% power (using 3500mAh Li battery)

Depth rated to 330ft / 100m



Sea Dragon Mini 1300S

Item SLKIT08

The Sea Dragon Mini 1300S Underwater Dive Light gives you a tight, high intensity long-range beam for maximum distance. The Mini 1300 features a 8° spot beam and three easy one-handed access power levels plus emergency one-second and SOS flash. A heavy duty BC lanyard and clip is included. The light runs on two CR123 or a single rechargeable 18650 Li battery.

Includes 18650 2600mAh 3.7V battery, 18650 USB Battery Charger, lanyard with BC clip, spare O-rings and lube.

Item SL654 - without battery & charger.

SPECIAL FEATURES

Luxeon V LED

100%, 50%, 25%, one second blink, emergency SOS

8° beam angle (6° underwater)

85 minute run time (full power); up to 5.5 hours at 25% power (using 3500mAh Li battery)

Depth rated to 330ft / 100m



Turn-key Mini lights include everything you need for your dive

We combine the Mini 900S and 1300S Dive lights with a high performing safety tested XTAR 18650 2600 mAh battery, along with a compact USB Mini Charger. The USB Mini charger works with common 5-watt USB power adapters, or it can be plugged into your computer's USB port for charging.

If the need arises, in case of loss or damage to the 18650 rechargeable battery, you may still use two CR123 single use Li batteries with these lights.



The Magic of Fluorescence

Shine it on for an amazing display of color!

The Sea Dragon Fluoro-Dual Beam also includes two essential **yellow barrier filters**; one for optimal fluoro-viewing and a universal lens cover for imaging.



Sea Dragon Fluoro-Dual Beam Item SL673

In partnership with Fire Dive Gear, SeaLife developed their Sea Dragon Fluoro-Dual Beam that emits a powerful blue light beam and adds an integrated dichroic filter creating the optimal light wavelength to excite underwater life. The integrated LED driver circuitry allows the light to operate at constant brightness throughout the battery life, so the light will not dim as battery power is reduced.

Switchable beams quickly adjust with the push of a button from blue fluoro 65° flood to white 800 lumen 15° spot, making the Fluoro-Dual Beam a truly versatile dive light. A removable 25Wh lithium ion battery delivers power for a full 60 minutes at full fluoro brightness.



The Fluoro-Dual Beam includes a Flex-Connect grip, single tray and SL995 Ball Joint Adapter for a universal fit.



800 lumens
65° + 15°
beam + spot



SPECIAL FEATURES

Six 5W CREE XT-E Royal Blue LEDs and one CREE XP-L white LED

26 watt/m² fluoro flood and 800 lumen white spot

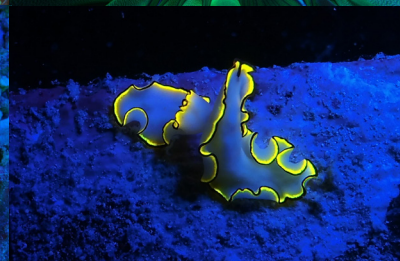
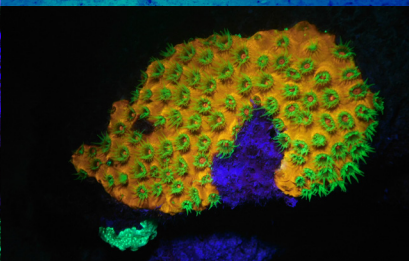
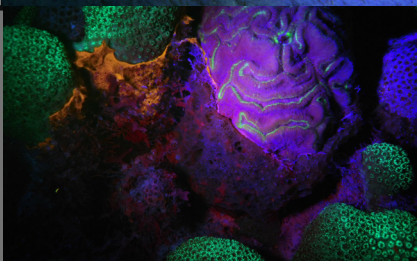
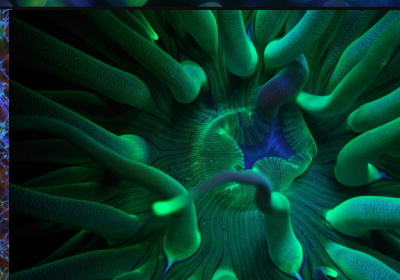
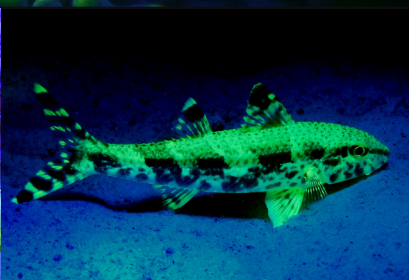
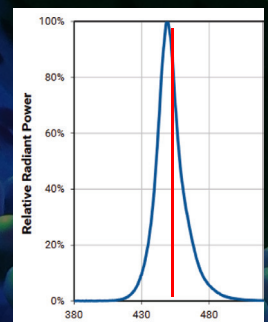
100% Fluoro Flood, 50% Fluoro Flood, 100% white spot and 50%, white spot brightness modes

65° Fluoro flood and 15° white spot beam angles

60 minute run time (full power); 170 minute charge time

Depth rated to 330ft / 100m

Why use a dichroic filter? The CREE Royal Blue LEDs emit a light wavelength that ranges between 440nm and 465nm, but a tighter 455nm wavelength is needed for an optimal fluoro effect.



SeaLife's lenses expand your underwater perspectives



Super Macro Lens for Micro Series & RM-4K Item SL571

The Super Macro Lens captures the intricate details of your photo and video subjects from 3.5" to 7" (9cm to 18cm). Features 2-element optical glass wet lens with anti-reflective coating and anodized aluminum construction with rubber press-on lens mount. Includes two removable focus distance sticks, safety lanyard and protective pouch. Fits all SeaLife Micro-series and ReefMaster RM-4K camera models.



Close Up Lens for Micro Series & RM-4K Item SL572

This +10 Diopter Close Up Lens cuts the close focus range to less than half (approximately 6"-24" or 15cm to 60cm). Features a single element optical grade wet lens with anti-reflective coating and anodized aluminum construction surrounded by a durable rubber press-on lens mount. Includes safety lanyard and protective pouch. Fits all SeaLife Micro-series and ReefMaster RM-4K camera models.



Micro Wide Angle Dome Lens Item SL052

The SeaLife Micro-series Wide Angle Lens increases the camera's field of view by 43% and allows for 3x closer shooting distance. For the SeaLife Micro 3.0, the lens angle is increased from 100° to 143° and shooting distance is reduced from 15"/38cm to 5"/13cm. The 0.7x dome lens high-grade optical design improves overall image quality and edge sharpness. Fits all SeaLife Micro-series and ReefMaster RM-4K camera models.



Lens Caddy for Micro, ReefMaster & DC-Series Lenses Item SL091

The SeaLife Lens Caddy mounts SeaLife DC, Micro and RM-4K series lens to a camera or tray using the standard 1/4-20 tripod screw or to any grip/arm up to 1.8" (45mm) in diameter using a sturdy hook & loop nylon strap. The Lens Caddy holds any DC series lens, Micro series, and ReefMaster RM-4K series lenses.





..... High CRI PRO Series



Sea Dragon 5000+

High Lumen COB LED
with two 220 lumen red LEDs
☀️ 5000-6000 Lumens
🔦 120° Wide Beam
🔋 50 Minutes at full power
🌊 330ft/100m depth
CRI 90 Color Rendering

Powering on at a brilliant 5000 lumens, the Sea Dragon 5000+ can increase brightness further with an extra boost, bringing the total to 6000 lumens of light.

The Sea Dragon 5000+ Gen 8 V18 COB LED has a sun-like color rendering of 90 CRI. With its Color Boost™ feature, the light's color temperature is adjustable from 5000K (Kelvin), 4000K, 3700K to 2700K.

Red is the first color in the visible light spectrum filtered out by water. Color-Boost™ replenishes the lost red colors and offers a variety of color tuned settings for varying conditions.



Photo/Video Lights & Sets



Sea Dragon 2000F
Item SL677



Sea Dragon 2500F
Item SL671



Sea Dragon 3000F Auto
Item SL678

Light Source	COB LED CREE CXA1816	COB LED Bridgelux Vero 18	1x COB LED Bridgelux Gen 7 Vero 2x CREE XP-E red LEDs
Brightness	2000 Lumens	2500 Lumens	White Light: 3000 Lumens Red Light: 180 Lumens
Brightness Levels	100%, 50%, 25%	100%, 50%, 25%	100%, 50%, 25%, Auto, Red
Light Modes	Constant or emergency signal	Constant or emergency signal	Automatic, constant or emergency signal
Color Temperature	5000k	5000k	5000k
CRI*	80	90	80
Beam Angle	120°	120°	White Light: 120° Red light: 88°
Battery	Lithium Ion 7.4V, 3400 mAh, 25Wh (included)	Lithium Ion 7.4V, 3400 mAh, 25Wh (included)	Lithium Ion 7.4V, 3400 mAh, 25Wh (included)
Run Time (@100%)	60 minutes	60 minutes	60 minutes
Depth	330ft / 100m	330ft / 100m	330ft / 100m
Head Only Item	Item SL6770	Item SL6712	Item SL6780
Included Tray/Grip	Micro Tray, Grip, GoPro® camera adapter	Single Tray, Grip, Sea Dragon Case, GoPro® camera adapter	Single Tray, Grip, Sea Dragon Case, GoPro® camera adapter

Strobes



**Sea Dragon
Universal Flash**
Item SL963



**Sea Dragon Duo
3000 Flash**
Item SL690



**Sea Dragon Duo
X2 Flash**
Item SL988

Light Source	1 x XENON Flash Tube	COB LED Bridgelux Vero 18 3000 (Auto) 1 x XENON Flash Tube (Flash)	2 x XENON Flash Tube
Brightness	Guide Number 20 66' (20m) full power/ 5' (1.5m) low	3000 / Flash	Guide Number 20 66' (20m) full power/ 5' (1.5m) low
Brightness Levels	Manual 8% to 100%, Auto	100%, 50%, 25%, Auto / Flash	Manual 8% to 100%, Auto
Light Modes	Automatic or manual	Constant, Auto, Flash	Automatic or manual
Color Temperature	5700k, 5400k (diffuser)	5000k ~ 6000k	5700k, 5400k (diffuser)
CRI*	98	80 / 98	98
Beam Angle	80° horizontal x 60° vertical, 100° x 100° (diffuser)	120° x 100°	80° horizontal x 60° vertical, 100° x 100° (diffuser)
Battery	4 AA Batteries (not included)	Lithium Ion 7.4V, 3400 mAh 25Wh (3000 Auto) (included) / 4AA (Flash) (not included)	8 AA Batteries (not included)
Run Time (@100%)	250 flashes at full brightness (with Energizer Lithium AA)	60 minutes / 250 flashes	250 flashes at full brightness (with Energizer Lithium AA)
Depth	200ft / 60m	200ft / 60m	200ft / 60m
Head Only Item	Item SL9631	Item SL6780 / Item SL9631	Item SL9631
Included Tray/Grip	Single Tray, Grip, Sea Dragon Case	Dual Tray, 2x Grip, Travel Case, GoPro® camera adapter	Dual Tray, 2x Grip, Travel Case, GoPro® camera adapter

Photo/Video Lights & Sets



Sea Dragon Pro Dual Beam
Item SL679



Sea Dragon Duo 5000
Item SL989



Sea Dragon Duo 6000
Item SL691

Light Source	1x 3000 lumen COB LED BridgeLux V18 1x 1500 lumen LED Luminus SST-40-W 2x Red Luminus SST-10-R LEDs	2x COB LED Bridgelux Vero 18	2x COB LED Bridgelux Gen 7 Vero 4x CREE XP-E red LEDs
Brightness	White Light: 3000 Lumen Flood/1500 Lumen Spot Red Light: 180 Lumens	2x 2500 Lumens	2x 3000 Lumens
Brightness Levels	100%, 50%, 25%, Auto, Red	100%, 50%, 25%	100%, 50%, 25%, Auto, Red
Light Modes	Constant or emergency signal	Constant or emergency signal	Automatic, constant or emergency signal
Color Temperature	5000K for COB wide beam LED 6000K for narrow beam LED	5000k	5000k
CRI*	90 for 3000 lumen COB wide beam LED 70 for 1500 lumen narrow beam LED	90	80
Beam Angle	White Light: 120°, 15° Red light: 88°	120°x2	120°x2
Battery	Lithium Ion 7.4V, 3400 mAh, 25Wh (included)	Lithium Ion 7.4V, 3400 mAh, 25Wh (included)	Lithium Ion 7.4V, 3400 mAh, 25Wh (included)
Run Time (@100%)	Wide Beam: 60 minutes Narrow Beam: 80 minutes	60 minutes	60 minutes
Depth	330ft / 100m	330ft / 100m	330ft / 100m
Head Only Item	Item SL6791	Item SL6712	Item SL6780
Included Tray/Grip	Single Tray, Grip, Sea Dragon Case, GoPro® camera adapter	Dual Tray, 2x Grips, Travel Case, GoPro® camera adapter	Dual Tray, 2x Grips, Travel Case, GoPro® camera adapter

*CRI = Color Rendering Index
All lights feature a battery over-pressure safety release valve. The beam angles for the Sea Dragon lights are shown as the true, tested "in-air" (above water) beam angle. Due to light refraction, the angle tightens to approximately 33% less underwater (i.e. 120° = 90° underwater).



AquaPod Mini

Item SL912

The SeaLife AquaPod Mini allows you to shoot pictures and videos from creative viewing angles, take self-portraits, and capture close up photos and videos of your subject while maintaining your distance. The AquaPod Mini's corrosion-proof design assures years of use in a saltwater environment. The AquaPod Mini (extends from 15.5in to 38in / 39.3cm - 97cm) fits all cameras with the included 1/4-20 standard tripod mount and adapter for GoPro® cameras.



SeaLife Photo Pro Backpack

Item SL940

The active diver requires more than just a gear bag for camera gear: You need a pack that travels well, is compact enough to fit into the overhead bin or under the seat in small island hopping commuter aircraft, and offer all the storage solutions for your photo gear. The SeaLife Photo Pro Backpack features a waterproof interior, to keep surrounding compartments dry and to keep moisture out.

The interchangeable, multi-compartment interior design fits photo gear up to a full sized camera and housing with several lights or strobes, such as the **Micro 3.0 Pro 5000 Duo Set**, plus one or two lenses, batteries and all charging accessories. There's a separate compartment for a tablet or small notebook PC, and deep side pockets to accommodate a monopod or tripod.



The internal compartments create secure, cushioned homes for your camera equipment. Easily movable dividers allow you to create the perfect compartments to hold your gear.

Sea Dragon Custom EVA Case

Item SL942

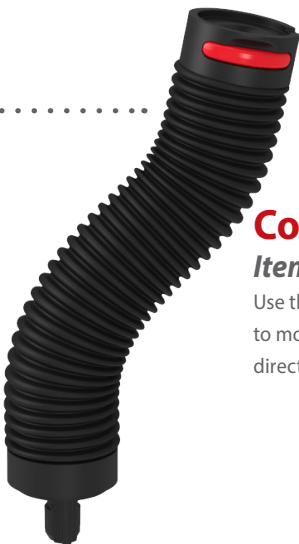
Thermo-molded EVA case for your camera, light and other accessories. Protective, yet compact. Designed to hold your essential gear and easily fit into your luggage or carry-on bag.



Flex Arm

Item SL9901

Expand your camera set with one "click." Flex Arms feature 100° of bending motion, add 7 inches in length and allow you to direct light wherever you need it. Add up to two arms per side.



Grip

Item SL9905P

The rubber-armored grip provides comfortable and improved handling for your light, flash, or underwater camera set. It "clicks" directly into any Flex-Connect Tray and accepts all Sea Dragon Light and Flash heads.



Cold Shoe Mount

Item SL991

Use the Flex-Connect Cold Shoe Mount to mount a light, flash or action camera directly to the cold shoe of your camera.



Adapter for Action Cameras

Item SL996

Mount a GoPro® camera to Flex-Connect accessories. Ideal for mounting an action camera directly above your DC-series or other underwater camera using the Flex-Connect Cold Shoe Mount.

Handle

Item SL998

Use a powerful Sea Dragon Light as a handheld dive light by connecting it to the ergonomic Flex-Connect Handle. The base features stainless 1/4-20 threads to attach a D-ring for a lanyard, or mount a camera.



8"/20cm Rigid Ball Arm

Item SL9909

Rigid, 8"/20cm anodized aluminum 1" ball arm. Fits to 1" ball clamps for a rigid mounting solution. Use with SL9907 clamp and SL995, SL999 ball joints.



YS Adapter

Item SL994

Connect any underwater light or flash that uses a YS Mount to Flex-Connect accessories including grips, trays, Flex Arms, and Cold Shoe Mount.

Dual Tray

Item SL9904

Single Tray

Item SL9903P

Micro Tray

Item SL9902

The compact Micro Tray is perfect for adding light and stability to your ultra-compact camera, while the Dual Tray expands your camera set with multiple lighting options. A sturdy stainless 1/4-20 mounting bolt holds your camera in place on the trays' rubber pad.



flex-connect[®]

Mounting Accessories



1-Inch Ball Clamp

Item SL9907

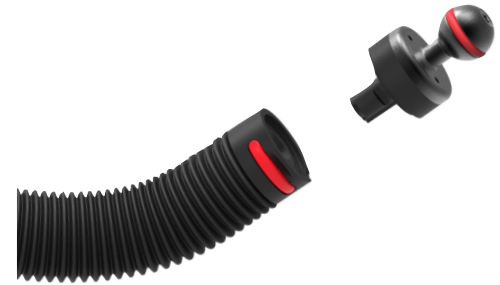
Connects two 1-inch diameter ball mounts together. The plates are spring-loaded for easy assembly and breakdown. Its wing-nut handle features an attractive red anodized finish.



Ball Joint Adapters

Item SL995 Item SL999

Connect Sea Dragon lights and Flex-Connect accessories to any underwater camera using a standard 1"/25mm ball joint mounting system, or connect any light with a ball joint mount to Flex-Connect accessories.



Connects Sea Dragon Lights to any ball joint system (SL995)

Connects ball joint lights to Flex-Connect system (SL999)



Flex-Connect Sea Dragon Ball Joint Adapter connects Sea Dragon Lights to 1" ball joint system (SL995)

Ball Joint Adapter for Flex-Connect mounts ball joint lights to Flex-Connect system (SL999)



Pre-Built Mounting Kits for turn-key convenience



Dual Tray Kit

Item SLKIT03

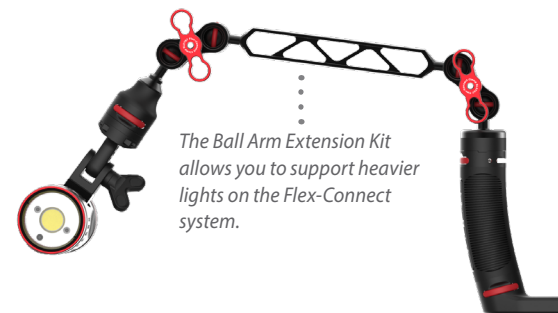
Complete with Flex-Connect Dual Tray, two Grips, two Flex Arms and two YS Adapters, this kit will help you get the most out of your underwater camera. Just add nearly any brand of camera and lights, and you're ready to head into the water. The tray uses a standard 1/4-20 tripod mount to fit most major brands of underwater cameras, and the YS adapter and Flex-Connect mounts attach to a wide array of underwater lighting brands.



Single Tray Kit

Item SLKIT02

This kit includes a Flex-Connect Single Tray, Grip, Flex Arm and YS Adapter. The tray uses a standard 1/4-20 tripod mount to fit most major brands of underwater cameras, and the YS adapter and Flex-Connect mounts attach to a wide array of underwater lighting brands.



The Ball Arm Extension Kit allows you to support heavier lights on the Flex-Connect system.

15"/38cm Rigid Ball Arm Extension Kit

Item SLKIT11

When you want a rigid arm system to support heavier lights or in heavy currents This arm kit includes the new SL9909 Flex-Connect 8" (20cm) 1" Ball arm; one SL995 Sea Dragon Ball adapter; one SL999 Flex-Connect Ball adapter and two SL9907 1" Ball Clamps.



Essential Gear for your adventure

SportDiver Color Filters

Item SL40007 (Red), Item SL40005 (Yellow), Item SL40003 (Magenta)

Removable underwater color-correction filter for the SportDiver that restores natural underwater colors. The Red and Yellow filters are designed for blue water conditions when not using an external light, or when using with a Fluoro light. Magenta Color-Correction Filter for green water color conditions. The filter also serves as a protective cover for the SportDiver's optical glass port.

Sea Dragon Red Fire Filter

Item SL9832

Aids in underwater navigation in darkness so to keep the eyes aware and dilated, this feature also prevents frightening nocturnal sea creatures. Presses on/off underwater and works with all Sea Dragon Lights with 1200 or more lumens (Not for imaging or Sea Dragon 4500/5000)

SeaLife Gear Retractor

Item SL925, Item SL926

Two sizes for compact cameras & compact lights; and large size for larger cameras, housings and lights. The retractors offer a quick-release clip feature that lets you quickly remove the attached device.

SL925: 32" (81cm) with 9oz. (255g) retraction force. 60lb. (27.2kg) breaking strength.

SL926: 42" (107cm) with 12oz. (340g) retraction force. 80lb. (36kg) breaking strength.

Universal Float Strap

Item SL920

Floats all SeaLife cameras and most other waterproof cameras and portable devices. Soft, comfortable closed-cell neoprene with orange liner for high visibility. Sliding lock securely adjusts strap to wrist. Integrated clip for attaching to BCD D-ring.

Screen Shield™ Screen Protector

Items SL3506(2"), SL5012 (2.4"), SL7402 (3"), SL4005 (6.8")

Waterproof screen protector for the Micro 3.0 Series, RM-4K, SportDiver Housing, and other compact cameras with a screen size of 6.8", 3", 2.4", 2" or smaller. The nano coating repels water and keeps the screen free of fingerprints while protecting against scratches.

Moisture Munchers

Item SL911

Moisture Muncher capsules fit inside SeaLife underwater camera and smartphone housings and absorb remaining internal moisture. Each tube absorbs its own weight in moisture; when the crystals turn from blue to pink, full absorption has been reached. Each package contains ten (10) 1.5g capsules containing color indicating silica gel.

50Wh Battery for Sea Dragon 4500F, 5000F, and 5000+ Lights

Item SL67510

Rechargeable lithium ion battery (3400mAh, 7.4V 50Wh) for Sea Dragon 4500F, 5000F, and 5000+ Lumen Lights.

ReefMaster RM-4K Spare Battery

Item SL3504

Rechargeable 3.8V 900mAh 3.42Wh lithium ion battery for the ReefMaster RM-4K camera. Powers camera for 2+ hours of operation. Can be charged inside the camera through a USB cable.

25Wh Battery for Sea Dragon 1200-3000 Lights

Item SL9831

Rechargeable lithium ion battery (3400mAh, 7.4V 25Wh) for Sea Dragon 1200, 1500, 2000, 2100, 2300, 2500, 3000, Pro Dual Beam Photo/Video Lights, and Fluoro-Dual Beam. Includes protective cap.

18650 3500 mAh Lithium Ion Battery

Item SL9828

XTAR 18650 3.6V 3500mAh Li-Ion rechargeable battery for Sea Dragon Mini 1300S, 1000F, 900S, 650S/F, Fluoro and other brands adds approximately 30% additional run time over 2600mAh 18650 cell.

18650 USB Mini Charger

Item SL9825

Charges 18650 and other Li-ion batteries. Connects to any 5V USB wall charger. Displays charging status and current. Ultra-compact design for easy travel. Includes USB cable and storage pouch. Battery not included.



SeaLife®

Pioneer Research 97 Foster Road, Suite 5 Moorestown, NJ 08057 USA 856.866.9191 info@sealife-cameras.com
sealife-cameras.com  SeaLifeCameras  SeaLifeCameras

Product Features and Specifications may change without notice. © 2023 Pioneer Research, Item SL816